

King Middle School



GO Team Meeting

April 18, 2024

Agenda



- I. Call to Order**
- II. Roll Call; Establish Quorum**
- III. Action Items**
 - a. Approval of Agenda
 - b. Approval of Previous Minutes:
- IV. Discussion Items**
 - a. 2024 Spring MAPS results
 - b. BASC-3 results
 - c. Needs Assessment
- V. Information Items**
 - a. Principal's Report
 - a. 2023-2024 Family Engagement and/or Partnership Highlights
 - b. Cluster Advisory Team
 - c. GO Team Elections
- VI. Announcements**
 - I. Gabbing With Gibbs – April 19th @ 3:00 p.m.
 - II. Best Buddies Friendship Walk- April 20th @ 8:30 a.m.
 - III. High Tea- April 20th @ 12:00 p.m.
 - IV. PTSA Elections/Meeting April 30th @ 6:00 p.m.
 - V. Georgia Milestones Assessment- April 29th – May 14th
 - VI. Athletics- Flag Football & Baseball
 - VII. Cheerleading Try-Outs – April 22-26th
 - VIII. End of the Year Activities
- VII. Public Comment**
- VIII. Adjournment**

2024 Spring MAP Results

Data Points to Consider

- Spring Results
- Fall to Spring Comparison
 - Literacy
 - Numeracy



MAP Growth Achievement Level Predictions by Grade

Georgia Milestones Achievement Level Predictions are only made for Grades 2-8 tests taken in English

click a grade-level or section to generate a list of students in that category combination below

School	Window	Grade	Exam	Exams	Predicted Proficiency Level			
King	Fall 2023-2024	06	Math	269	41%	37%	17%	
			Reading	270	38%	27%	27%	8%
		07	Math	261	46%	37%	13%	
			Reading	257	44%	30%	20%	6%
		08	Math	241	50%	39%	7%	
			Reading	237	42%	35%	18%	
	Spring 2023-2024	06	Math	269	45%	37%	13%	
			Reading	270	41%	30%	22%	7%
		07	Math	263	49%	28%	13%	9%
			Reading	265	44%	27%	22%	7%
		08	Math	250	54%	31%	11%	
			Reading	251	43%	27%	22%	8%

Predicted Proficiency Level

Distinguished

Proficient

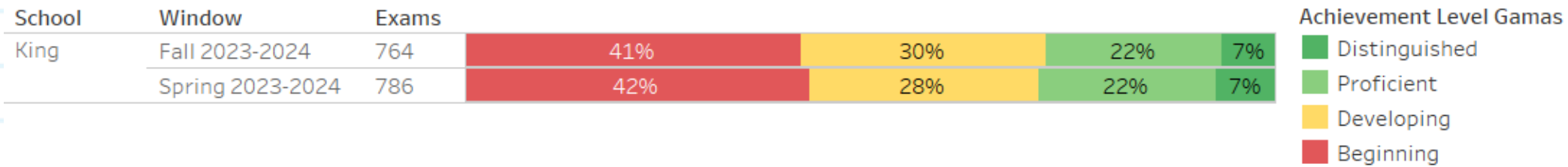
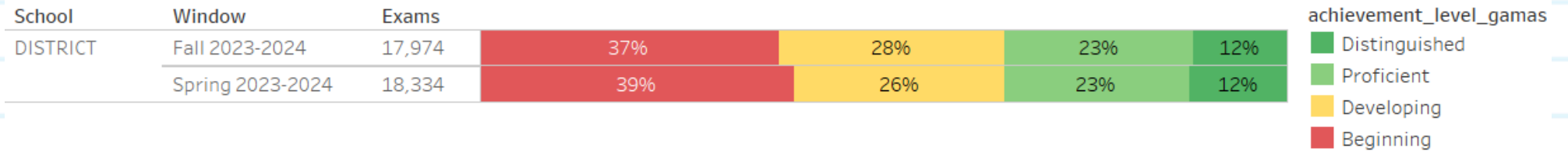
Developing

Beginning

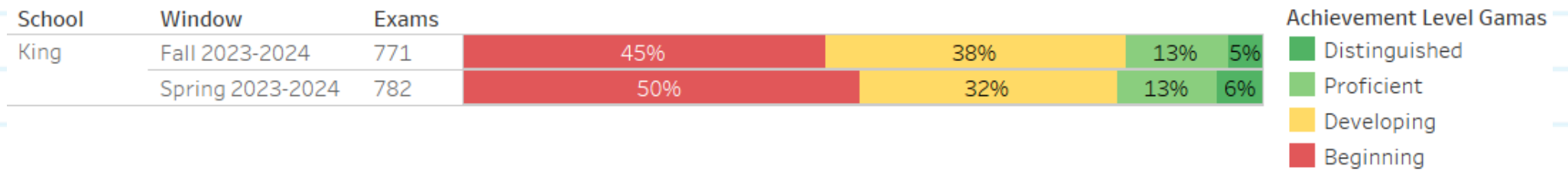
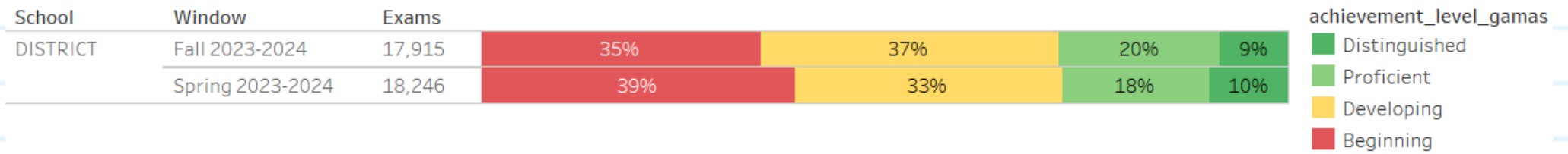
Increase of 1% in proficiency in math for all grade levels.

Maintained 29% proficiency in ELA/Reading for all grade levels.





ELA MAP school-wide 29% proficient on target to meet Milestone goal.



Math MAP school-wide 19% proficient on target to meet Milestone goal.

6th grade MAP Fall to Spring

MAP Growth Achievement Level Predictions by Grade

Georgia Milestones Achievement Level Predictions are only made for Grades 2-8 tests taken in English

click a grade-level or section to generate a list of students in that category combination below

School	Window	Grade	Exam	Exams	Predicted Proficiency Level			
King	Fall 2023-2024	06	Math	269	41%	37%	17%	
			Reading	270	38%	27%	27%	8%
	Spring 2023-2024	06	Math	269	45%	37%	13%	
			Reading	270	41%	30%	22%	7%

Distinguished

Proficient

Developing

Beginning

Decrease in proficiency for math from fall to spring

Decrease in proficiency for reading from fall to spring



7th grade MAP Fall to Spring

MAP Growth Achievement Level Predictions by Grade

Georgia Milestones Achievement Level Predictions are only made for Grades 2-8 tests taken in English

click a grade-level or section to generate a list of students in that category combination below

School	Window	Grade	Exam	Exams	Predicted Proficiency Level			
King	Fall 2023-2024	07	Math	261	46%	37%	13%	
			Reading	257	44%	30%	20%	6%
	Spring 2023-2024	07	Math	263	49%	28%	13%	9%
			Reading	265	44%	27%	22%	7%

Increase in proficiency from fall to spring in math from 18% to 22%

Increase in proficiency from fall to spring in ELA/Reading from 26% to 29%



8th grade MAP Fall to Spring

MAP Growth Achievement Level Predictions by Grade

Georgia Milestones Achievement Level Predictions are only made for Grades 2-8 tests taken in English

click a grade-level or section to generate a list of students in that category combination below

School	Window	Grade	Exam	Exams	Predicted Proficiency Level			
King	Fall 2023-2024	08	Math	241	50%	39%	7%	
			Reading	237	42%	35%	18%	
	Spring 2023-2024	08	Math	250	54%	31%	11%	
			Reading	251	43%	27%	22%	8%

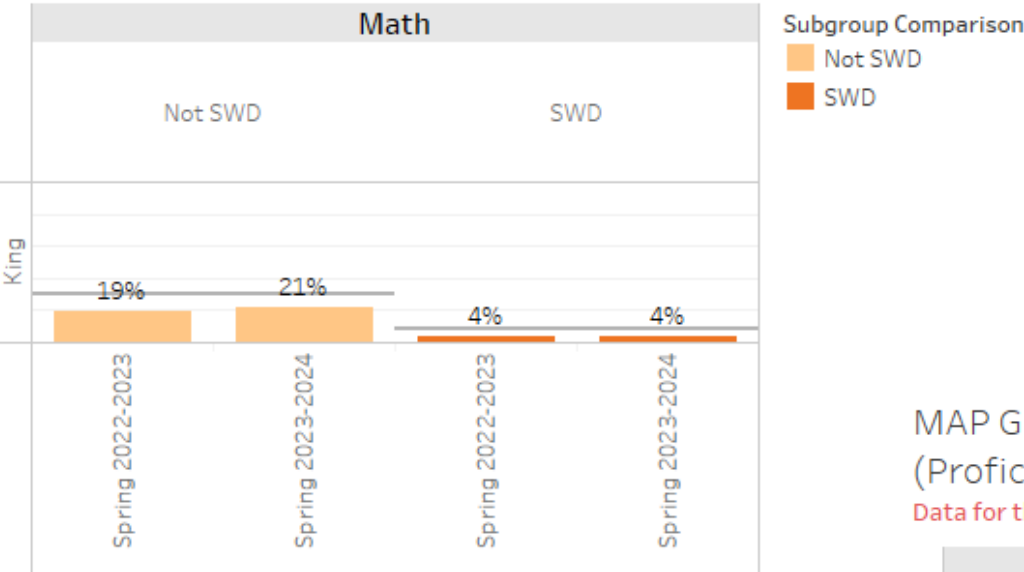
Increase in proficiency from fall to spring in math from 10% to 15%

Increase in proficiency from fall to spring in ELA/Reading from 26% to 30%



MAP Growth Subgroup Comparison
(Proficient and Above): King

Data for this comparison exists for Grades 2-8 ONLY.

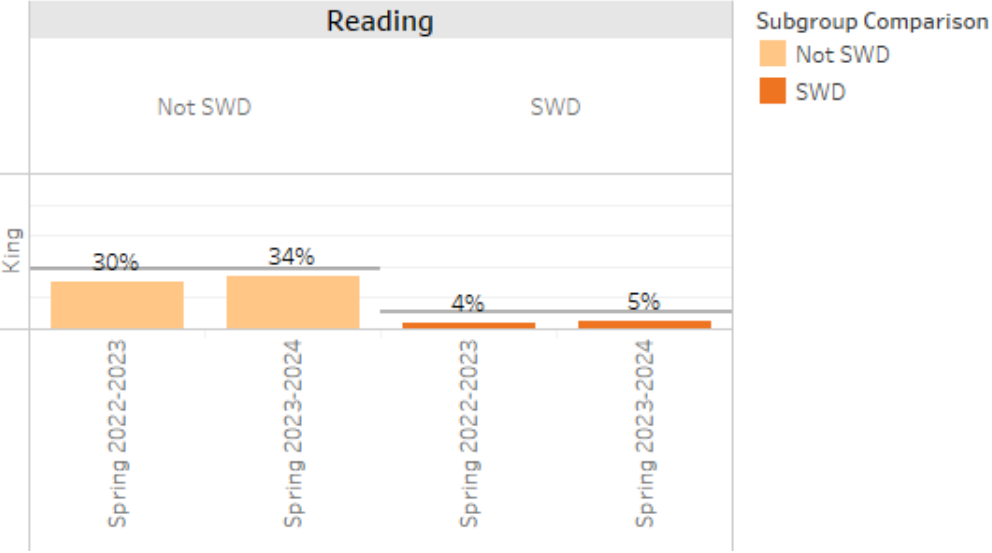


Math proficiency for SWD
stayed the same

ELA/Reading proficiency for SWD
increased by 1%

MAP Growth Subgroup Comparison
(Proficient and Above): King

Data for this comparison exists for Grades 2-8 ONLY.



Teaching and Learning for SWD and Gifted

SWD

- Instruction on grade level standards with scaffolding (differentiated)
- Small group instruction as needed
- Modified assignments aligned with individual student needs
- Extended time as outlined in IEPs
- Supports for behavioral challenges (BIPs)/Behavior interventions
- Accessible materials (audio books, graphic organizers, Chromebooks, paper/pencil as needed)
- Preferential seating
- Sensory supports as needed
- Collaboration with related services (Speech, occupational therapists)
- Tutorials
- Paper –Online Homework Support

Gifted Services

- Differentiated instruction to provide challenging material
- Enrichment classes/activities
- Personalized learning
- Flexible pacing to allow students to move ahead at their own pace
- Advanced programming/classes
- High school credit courses (8th grade)
- Independent research opportunities
- Preferential seating
- Tutorials
- Paper –Online Homework Support
- APEX-Online standards-based platform to support acceleration/remediation
- Enrichment/Clubs/Activities

Ideas for Next School Year

SWD

- Stetson Training for all Interrelated and Core Teachers
- Addition of AVID Strategies
 - What is this?
 - Teachers use the WICOR components to plan meaningful lessons in which critical thinking, academic skills, and collaboration are strengthened. WICOR-Writing, Inquiry, Collaboration, Organization and Reading
 - Training for Core Instructional Team this Summer June 2024
 - Training for staff at the beginning of the 24-25 SY
- Master Teacher Leader for Special Education
 - Half day teach, half day coach

Gifted Services

- Differentiated instruction to provide challenging material
- Personalized learning
- Addition of AVID Strategies
 - What is this?
 - Teachers use the WICOR components to plan meaningful lessons in which critical thinking, academic skills, and collaboration are strengthened. WICOR-Writing, Inquiry, Collaboration, Organization and Reading
 - Training for Core Instructional Team this Summer June 2024
 - Training for staff at the beginning of the 24-25 SY

<https://www.avid.org/teacher-effectiveness> (Teacher Effectiveness)

<https://www.avid.org/student-learning> (Student Learning)



BASC-3 Data

- Only administered it once to all learners
- Highly elevated learners received interventions and another administration in the spring



BASC Risk Type

Behavioral and Emotional Risk Index (BERI) ▼

Subgroup Comparison



ALL ▼

Grade

(All) ▼

Submitted by

(All) ▼

Timeframe

Fall 2023 ▼

Behavioral and Emotional Risk Index (BERI)

Students are given an overall BERI risk score (BERI T Score) that indicates how far their score is from the average of the norm group. The average BERI T score for the BESS is 50.

BASC Summary for Behavioral and Emotional Risk Index (BERI) by ALL

School	BASC Risk Type	Timeframe	Submitted by	Comparison Variable	Count	Extremely Elevated	Elevated	Normal
King	Behavioral and Emotional Risk Index (BERI)	Fall 2023	Student	ALL	712	5%	17%	78%
			Teacher/School official	ALL	679	7%	18%	75%

Needs Assessment

ACTIVITY



Needs Assessment

During this Needs Assessment, we will look at data from the Spring MAPS administration and identify 2-3 potential needs for the 2024-2025 school year.

This discussion will help school leadership as they complete the school's 2024-2025 Continuous Improvement Plan.

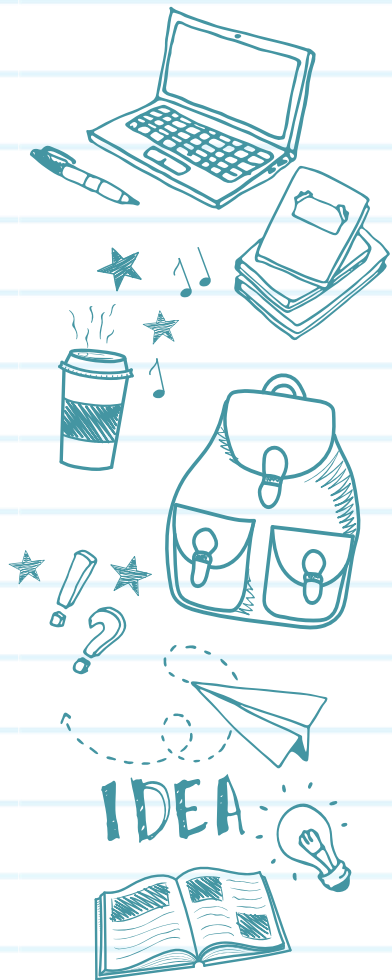
Needs Assessment: Guiding Questions

- What does this data tell us?
- What good news is there to celebrate?
- Where are growth opportunities?
- What trends do we see in the data?

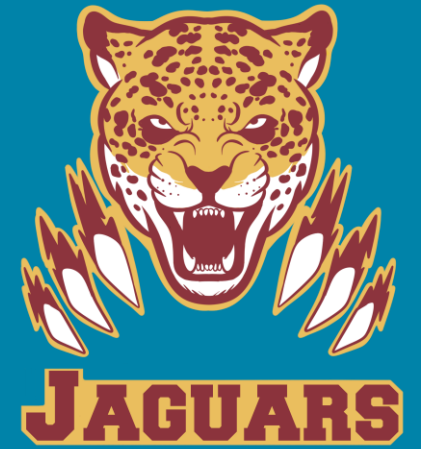
Needs Assessment:

What are two to three (2-3) needs we can identify based our data?

	Need
1	
2	
3	



Information Items



- a. Principal's Report
 - a. 2023-2024 Family Engagement and/or Partnership Highlights
 - b. Cluster Advisory Team
 - c. GO Team Elections



Principal's Report

- I. Gabbing With Gibbs – April 19th @ 3:00 p.m.
- II. Best Buddies Friendship Walk- April 20th @ 8:30 a.m.
- III. High Tea- April 20th @ 12:00 p.m.
- IV. PTSA Elections/Meeting April 30th @ 6:00 p.m.
- V. Georgia Milestones Assessment- April 29th – May 14th
- VI. Athletics- Flag Football & Baseball
- VII. Cheerleading Try-Outs – April 22-26th
- VIII. End of the Year Activities



Additional Information Items

- **Cluster Advisory Team Report**
- **GO Team Elections**
 - Find candidates at apsstrongschools.com
 - Vote **APRIL 16-25**
 - Households are sent a unique link based upon information in Infinite Campus
 - School Staff will be sent a link to their APS email address

Announcements

- **GO Team Members**
 - Complete your end of year surveys
 - Principal Feedback Survey (**AVAILABLE NOW!** Check your email for the link)
 - GO Team Satisfaction Survey (**Available May 1st**)
 - Complete your required trainings **ASAP**
 - Contact the GO Team Office with any questions





Thank
You

for yet another
great year!

